

# DURHAM ST. SEMIS



We are one of Durham Region's most established and respected development and construction companies. Our expert building team takes great pride and pleasure in producing the highest quality consumer-oriented homes possible, since 1982.

At Woodland Homes, we consider only the best for your family.

## Left & Right Sides

2,003 sq. ft.

## ELEVATIONS

Artist's Concept



All materials, specifications, and floor plans are subject to change without notice. All renderings are artist's conceptions.  
All floor plans are approximate dimensions. Actual useable floor space may vary from the stated floor area. E. & O. E. DECEMBER 2021

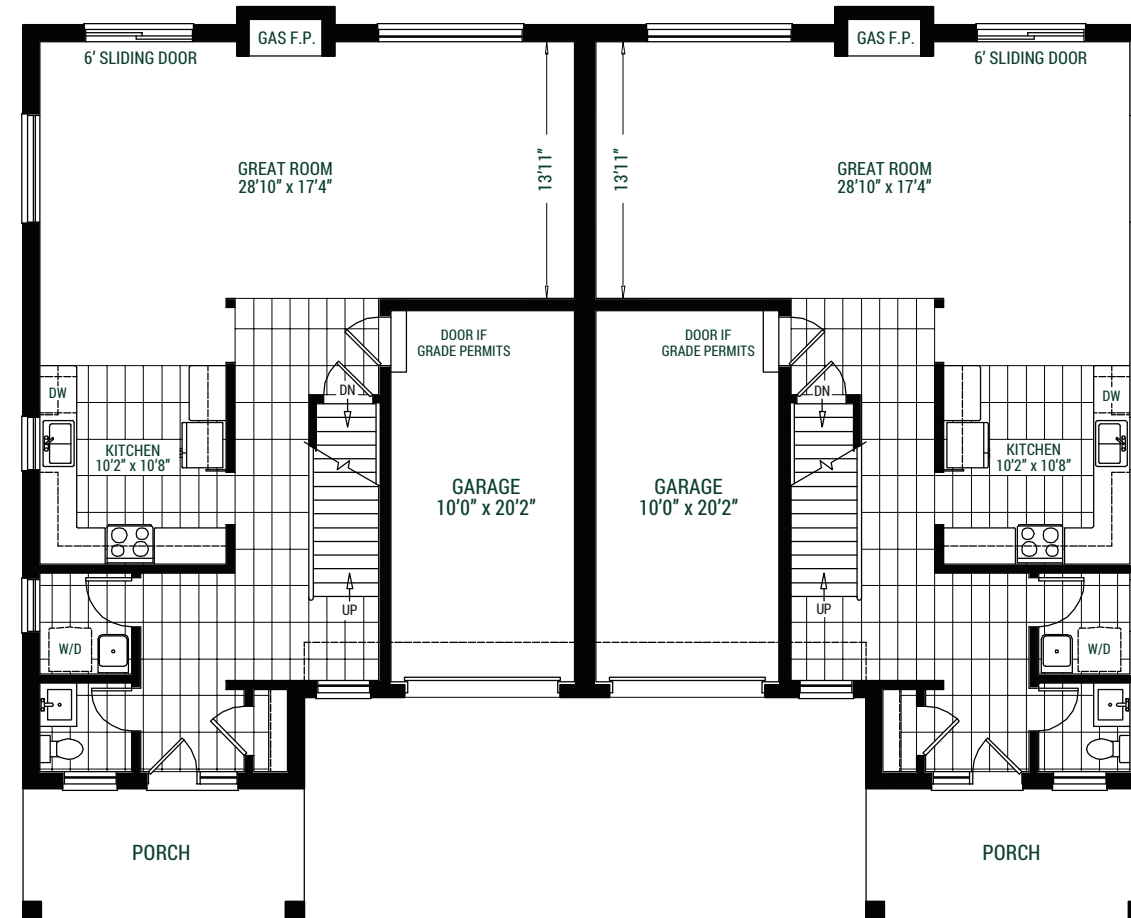
# DURHAM ST. SEMIS

4BR

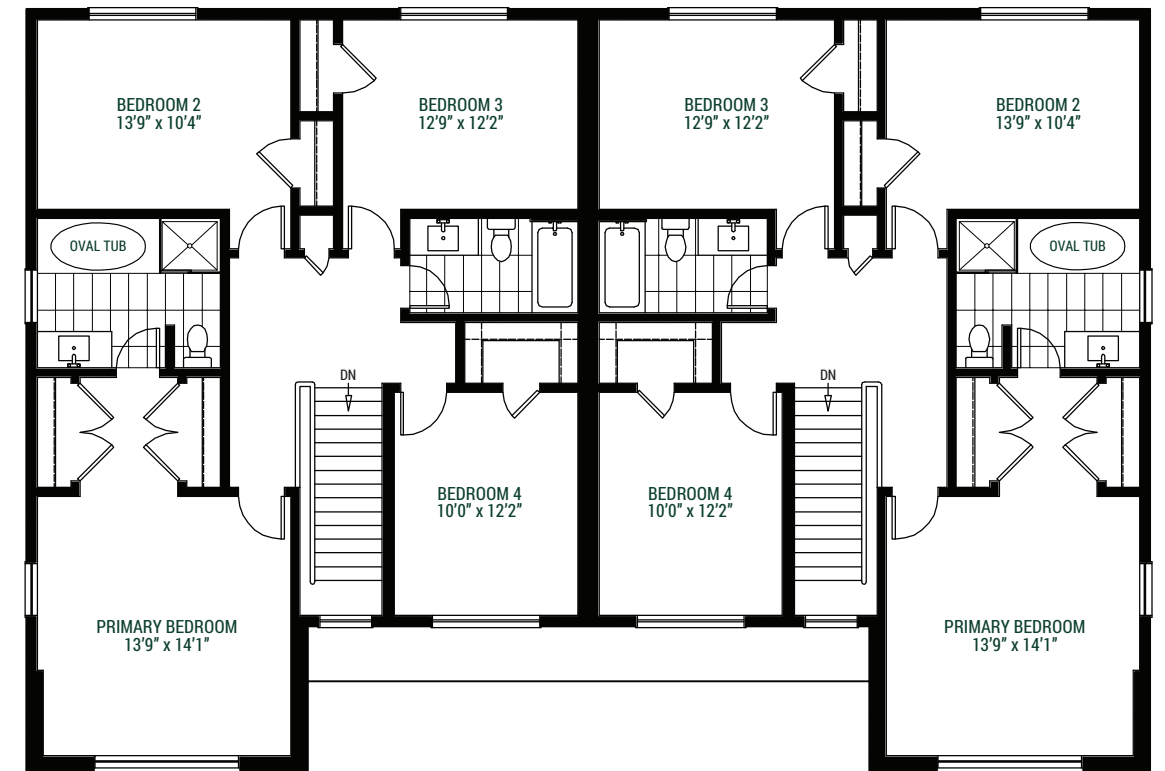
Left Side  
2,003 sq. ft

Right Side  
2,003 sq. ft

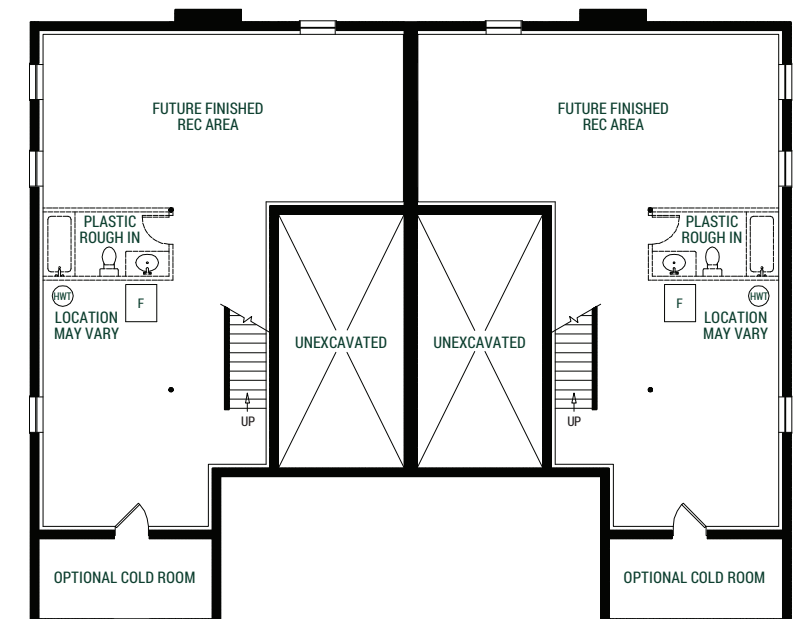
## GROUND FLOORS



## SECOND FLOORS



## BASEMENTS



All materials, specifications, and floor plans are subject to change without notice. All renderings are artist's conceptions.  
All floor plans are approximate dimensions. Actual useable floor space may vary from the stated floor area. E. & O. E. DECEMBER 2021



woodlanddurham.com